



Building set

# OPTIMA PLUS

Delivery list

This Building set is completed in the manufacturer's warehouse with the amount of materials, which allow assemble the house above the foundation so that it is finished from the outside. In this Building set doesn't include: foundation construction, engineering communications, inside finish, staircase, delivery and assembly costs.



"AIG-konstrukcijas" Ltd. Phone: + 371 292 787 05  
[www.aig-familyhouses.eu](http://www.aig-familyhouses.eu) [info@aig-familyhouses.eu](mailto:info@aig-familyhouses.eu)

# What is included in building set OPTIMA PLUS

## GENERAL:

House assembling drawings.	Include
Delivery list.	Include

## EXTERNAL WALL PANELS (U~0,14 W/(m<sup>2</sup>K)):

Exterior wooden trim 18 mm.	Include
Battens 32 mm.	Include
Wind insulation (9 mm OSB-3 board, or Norgips GU board).	Include
Timber frame C24, 245mm.	Include
Thermal insulation (mineral wool 245mm). .	Include
Vapor barrier 0,2mm.	Include
Battens 45 mm.	Include
Thermal insulation (mineral wool 45mm).	Include
OSB-3 board, 12 mm.	Include
Plasterboard 12,5 mm.	Include
Pipes and boxes for the electrical communication.	Include
PVC Windows with triple glass, white frame, assembling foam seal tape (U~0,9 w/m <sup>2</sup> *K).	Include
PVC door to terrace with triple glass, white frame (U~0,9 w/m <sup>2</sup> *K).	Include
External doors – “Jeldwen” Function U~0,8 w/m <sup>2</sup> *K.	Include
Windows & doors openings decoration from outside with wood trim.	Include
Windows & doors openings decoration from inside with plasterboard.	Include
Internal windows sill, laminated chipboard in white color.	Include
External widows sill (Tin).	Include
Tin flashing above the window (if it is necessary).	Include
Insulation tape between panels.	Include
Armed hydro isolation.	Include
Anti-rodent protection net.	Include
All components for assembling.	Include

## EXTERNAL WALL FOR LOFT

Exterior wooden trim 18 mm.	Include
Battens 32 mm.	Include
Timber frame.	Include
Wind insulation (9mm, OSB-3 board or Norgips GU board).	Include
External door for loft (~700x900mm).	Include
Tin flashing (if it is necessary).	Include
Anti-rodent protection net.	Include
All components for assembling.	Include

# What is included in building set OPTIMA PLUS

## LOAD BEARING INTERNAL WALL PANELS :

Plasterboard 12,5 mm.	Include
OSB-3 board, 12 mm.	Include
Timber frame 95 till 195mm.	Include
Columns, beams.	Include
Acoustic insulation (mineral wool 50 mm).	Include
OSB-3 board, 12 mm.	Include
Plasterboard 12,5 mm.	Include
Pipes and boxes for the electrical communication.	Include
Insulation tape between panels.	Include
Armed hydro isolation.	Include
All components for assembling.	Include

## NON-BEARING INTERNAL WALL:

Plasterboard 12,5 mm.	Include
OSB-3 board, 12 mm.	Include
Timber frame 95 mm.	Include
Acoustic insulation (mineral wool 50 mm).	Include
OSB-3 board, 12 mm.	Include
Plasterboard 12,5 mm.	Include
Pipes and boxes for the electrical communication.	Include
Insulation tape between panels.	Include
All components for assembling.	Include

## ROOF AND CEILING CONSTRUCTION

Tin roofing.	Include
Wooden battens 32mm c/c~250mm.	Include
Wooden battens 32mm (c/c = truss c/c).	Include
Roof underlay (~200mk)	Include
Trusses, rafters (snow load 250 kg/m2).	Include
Thermal insulation (mineral wool for horizontal area) 300 mm	Include
Vapor barrier.	Include
Wooden battens 30mm, c/c 300mm.	Include
Plasterboard 12,5 mm.	Include
Boarding for roof overhangs.	Include
Ventilation output above the roof.	Include
Metal gutters and downpipes.	Include
All components for assembling.	Include

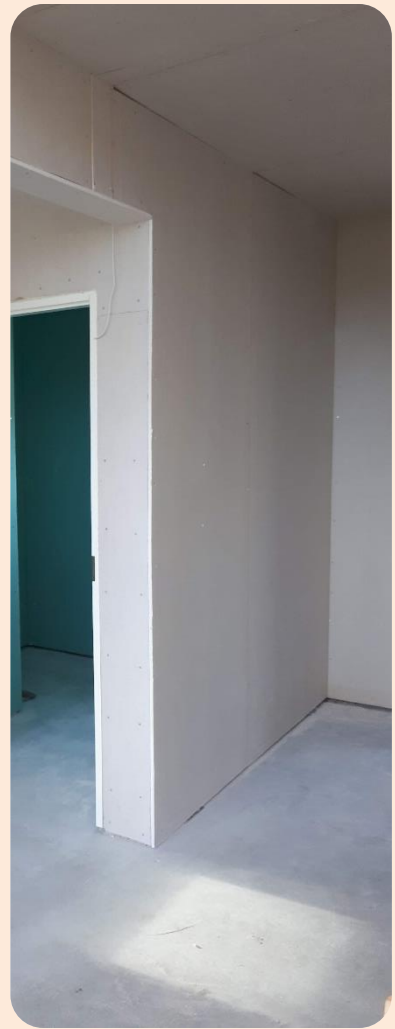
This Building set is completed in the manufacturer's warehouse with the amount of materials, which allow assemble the house above the foundation so that it is finished from the outside.

In this Building set doesn't include: foundation construction, engineering communications, inside finish, staircase, delivery and assembly costs.

# Building set after assembling.



# Building set after assembling.



# Using Materials.

## Exterior wall paneling:

For house facade we use a wood boards with finesawn surface. We mainly use a paint that have proven reliable in Nordic conditions from well known European suppliers, e.g. Teknos, Tikkurila.



Exterior wall paneling.



Exterior wall panelling and soffit boards.

## Tin roofing:



## Jeld-wen Exterior doors:



FUNCTION  
F186 W28



FUNCTION  
F1896 W84



FUNCTION  
F2090



FUNCTION  
F2054 W53



FUNCTION  
F2053 W83

## PVC windows with windowsills



6-chambered frame,  
triple glazing



Internal windowsills  
from high quality  
laminated chipboard.



Tin windowsills

## Additional explanations.

1. This building set doesn't include : foundation construction, engineering communications, inside finish, staircase, delivery and assembling costs.
2. The pictures in this description have indicative character.
3. Depending on supplier price changes, the cost of construction set may vary.
4. Depending on the supplier's material assortment and specifications changes, the materials can change, which does not deteriorate the properties of the product.
5. According to the individual needs of the client, building sets, their contents and quantities of materials may vary.
6. "AIG-konstrukcijas" provide assembling services in the following ways:
  - a) We provided assembling scheme for local assemblers;
  - b) We appoint a engineer, who leads the local assemblers work in agreed time;
  - c) "AIG-konstrukcijas" full assembling service:" everything that has been delivered is assembled".



**"AIG-konstrukcijas" Ltd**  
**"Bērzkalni", Ikšķiles novads,**  
**LV-5052, Latvia.**

**Janis Jansons**

**Phone: + 371 292 787 05**

**E-mail: [info@aig-familyhouses.eu](mailto:info@aig-familyhouses.eu)**

